



ELASTIC RAIL CLIPS • GFN-66 INSULATING LINERS • COMPOSITE GROOVED RUBBER SOLE PLATES • SGCI INSERTS

• RAILWAY COMPOSITE POLYMER INSULATORS • RUBBER TO METAL BONDED COMPONENTS FOR COACHES & WAGONS

**M/s ADINATH INDUSTRIES** is an ISO 9001:2015 Certified Vendor for Indian Railways; registered with Research Design & Standard Organization (RDSO) Lucknow for Manufacturing of Rubber, Plastic, Casting and Forging Components for Railway Track Fastening System, Coaches & Wagon components and OHE Composite Polymer Insulators for Railways, Transmission & Distribution lines.

## 25 KV COMPOSITE POLYMER INSULATORS FOR RAILWAYS/ METRO RAIL 1600/ 1050mm CD





An ISO 9001:2015 Certified Company



ELASTIC RAIL CLIPS • GFN-66 INSULATING LINERS • COMPOSITE GROOVED RUBBER SOLE PLATES • SGCI INSERTS

• RAILWAY COMPOSITE POLYMER INSULATORS • RUBBER TO METAL BONDED COMPONENTS FOR COACHES & WAGONS

## Full Range of 25kV Composite Polymer Insulators

Railway Traction in 1050/ 1600mm CD FOR RAILWAYS/ METRO RAILS/ DFCCIL/ RRTS/ HIGH-SPEED PROJECTS



**Stay Arm Hook Insulator**



**Bracket Insulator 40mm-Bracket**



**9 Tonne Insulator**



**Bracket Insulator 70mm-Bracket**



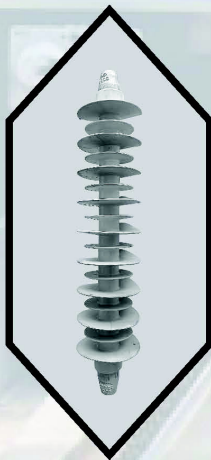
**Stay Arm Insulator 55mm-Bracket**



**25 kV Post Insulator**



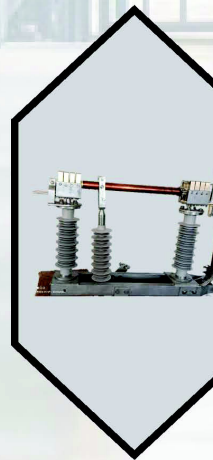
**Sectioning Insulator**



**Operating Rod Insulator**



**Bracket Insulator Modular Cantilever**



**25 kV Isolator**



+91-98100 60890  
+91-98111 54680



info@adinathindus.com



www.adinathindus.com



**Works Plant 1 & 2:**

E-45 (G-2) & E-41 (A), RIICO Ind. Area  
Khushkhera, Bhiwadi, Dist. Alwar  
Rajasthan-301707 (INDIA)



gautam.jain@adinathindus.com



**Corporate Office:**

31, Rajendra Park, Pusa Road  
New Delhi- 110060 (INDIA)



gaurav.jain@adinathindus.com



marketinghod@adinathindus.com







An ISO 9001:2015 Certified Company



**ELASTIC RAIL CLIPS • GFN-66 INSULATING LINERS • COMPOSITE GROOVED RUBBER SOLE PLATES • SGCI INSERTS**

**• RAILWAY COMPOSITE POLYMER INSULATORS • RUBBER TO METAL BONDED COMPONENTS FOR COACHES & WAGONS**

## 25 kV COMPOSITE POLYMER INSULATORS FOR RAILWAY TRACTION (RDSO APPROVED)

M/s Adinath Industries is an ISO 9001:2015 Certified RDSO (LKO) Approved Source; Manufacturing & Supplying 25 kV Composite Polymer Insulators for Indian Railway and Metro Rail Projects. Polymeric based Composite Insulators are extensively used for Overhead Electric Traction System (OHE); Composite Polymer Insulators are Highly Technical & Safety Product which plays an important role in the OHE Projects to ensure undisturbed regular Power Supplies.

**Composite Polymer Insulators are Light in Weight, Unbreakable, Hydrophobic, Resistant to Ozone, UV Radiations, Earth Quake Shocks & Vandalism.**

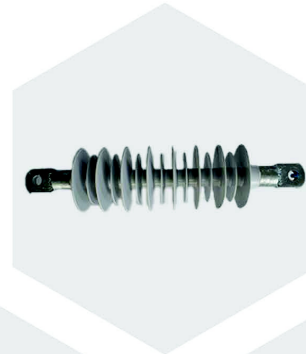
25 kV Composite Polymer Insulators are strictly Manufactured as per RDSO Approved Drawings & Specification No. TI/SPC/OHE/INSCOM/1071 (Rev 01). These Insulators are specially designed for Polluted & Highly Polluted Zones in two different Creepage Distances i.e. 1050 mm & 1600 mm.

**We have an installed capacity of more than 3.0 Lacs Nos. Per Annum to Manufacture and Supply 25 kV Composite Insulators with in-house facility to Manufacture our own FRP Pultrusion Rods and SGCI / Forged Metal End Fittings.**

We are well equipped with all Modern Manufacturing Facilities & Fully Equipped with In-house testing laboratory to Manufacture Composite Polymer Insulators, managed by Professional Team and Polymer Technologists which ensures High Quality Engineering Solutions to continuously improve the Quality and Production Volumes.

### Our Manufacturing Facility:

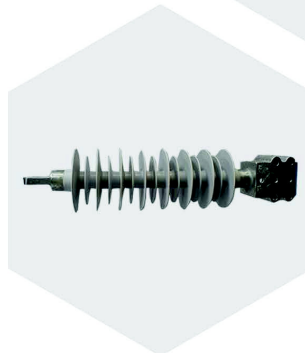
- DESMA Make Rubber Injection Moulding Machines 250 T – 400 Tons
- Crimping Machines 250 T – 550 Tons
- Pultrusion Machine for Manufacturing FRP Rods
- Power Press / Forging Facility
- In-house Induction Foundry Set up for SGCI End Fittings
- Galvanizing Set up



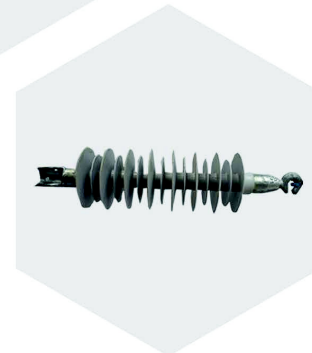
25 kV 9 T Composite Polymer Insulator for Railways

### Our Testing Facility:

- Thermo-Mechanical Chamber
- UV & Weathering Testing Facility
- UTM (20 Tons Capacity)
- Conditioning Chamber
- Non Destructive Testing facility (NDT)
- Acquisition System for Detection of FRP Rod Crack
- Rheometer for Rubber Rheology
- Tracking & Erosion Testing Facility
- Up to 250 kV AC High Voltage testing Facility



25 kV Composite Polymer Bracket Insulator for Railways



25 kV Composite Polymer Stay Arm Insulator for Railways

### Our 25 kV Composite Polymer Insulator Product Range:

S.No.	Item Name	Tube Size (mm)	Min. Creepage Distance (mm)	Mechanical Load (Kgf)	Approval
1.	Composite Bracket Insulators	40	1050 / 1600	7000	RDSO / DFCCIL / DMRC
2.	Composite Stay Arm Insulators	40	1050 / 1600	7000	
3.	Composite 9 Tonne Insulators	-	1050 / 1600	11000	
4.	Composite Stay Arm Insulators	55	1050 / 1600	7000	DFCCIL / DMRC
5.	Composite Bracket Insulators	70	1050 / 1600	7000	

Note: All our Instruments & Equipment's are duly calibrated by NABL Accredited Laboratories.



**+91-98100 60890**  
**+91-98111 54680**



info@adinathindus.com



www.adinathindus.com



#### Works Plant 1 & 2:

E-45 (G-2) & E-41 (A), RIICO Ind. Area  
Khushkhera, Bhiwadi, Dist. Alwar  
Rajasthan-301707 (INDIA)



gautam.jain@adinathindus.com



#### Corporate Office:

31, Rajendra Park, Pusa Road  
New Delhi- 110060 (INDIA)



gaurav.jain@adinathindus.com



marketinghod@adinathindus.com





ELASTIC RAIL CLIPS • GFN-66 INSULATING LINERS • COMPOSITE GROOVED RUBBER SOLE PLATES • SGCI INSERTS

• RAILWAY COMPOSITE POLYMER INSULATORS • RUBBER TO METAL BONDED COMPONENTS FOR COACHES & WAGONS

# 25 kV COMPOSITE POLYMER INSULATORS FOR RAILWAY TRACTION

M/s Adinath Industries is an ISO 9001:2015 Certified RDSO (LKO) Approved Source; Manufacturing & Supplying 25 kV Composite Polymer Insulators for Indian Railway and Metro Rail Projects. Polymeric based Composite Insulators are extensively used for Overhead Electric Traction System (OHE); Composite Polymer Insulators are Highly Technical & Safety Product which plays an important role in the OHE Projects to ensure undisturbed regular Power Supplies.

25 kV Composite Polymer Insulators are strictly Manufactured as per RDSO Approved Drawings & Specification No. TI/SPC/OHE/INSCOM/1071 (Rev 01). These Insulators are specially designed for Polluted & Highly Polluted Zones in two different Creepage Distance i.e. 1050 mm & 1600 mm.

**We have an installed capacity of more than 2.0 Lacs Nos. Per Annum to Manufacture and Supply of 25 kV Composite Polymer Insulators with in-house facility to Manufacture our own FRP Pultrusion Rods and SGCI / Forged Metal End Fittings.**

We are well equipped with all Modern Manufacturing Facilities & Fully Equipped with In-house testing laboratory to Manufacture Composite Polymer Insulators, managed by Professional Team and Polymer Technologists which ensures High Quality Engineering Solutions to continuously improve the Quality and Production Volumes.

## Our Manufacturing Facility:

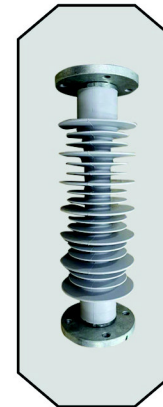
- DESMA Make Rubber Injection Moulding Machines 250 T – 400 Tons
- Crimping Machines 250 T – 550 Tons
- Pultrusion Machine for Manufacturing FRP Rods
- Power Press / Forging Facility.
- In-house Induction Foundry Set up for SGCI End Fittings
- Galvanizing Set up

## Our Testing Facility:

- Thermo-Mechanical Chamber
- UV & Weathering Testing Facility.
- UTM (20 Tons Capacity)
- Conditioning Chamber
- Non Destructive Testing facility (NDT).
- Acquisition System for Detection of FRP Rod Crack
- Rheometer for Rubber Rheology.
- Tracking & Erosion Testing Facility.
- Up to 250 kV AC High Voltage testing Facility.



25 kV Sectioning Insulator



25 kV Post Insulator



25 kV Operating Rod Insulator

## Our 25 kV Composite Polymer Insulator Product Range:

S.No.	Item Name	Section Length	Min. Creepage Distance (MM)	Mechanical Load (Kgf)	Approval
<b>POST INSULATOR</b>					
1.	Composite Post Insulators	420±2	1050	6000	RDSO
2.	Composite Post Insulators	500±2	1600	6000	RDSO / DMRC
<b>OPERATING ROD INSULATOR</b>					
3.	Composite Operating Rod Insulators	547±10	1050	2500	RDSO
4.	Composite Operating Rod Insulators	630±10	1600	2500	RDSO / DMRC
<b>SECTIONING INSULATOR</b>					
5.	Composite Section Insulators	580±10	1050	5000kgf	RDSO
6.	Composite Section Insulators	580±10	1600	5000kgf	RDSO / DMRC



+91-98100 60890  
+91-98111 54680



info@adinathindus.com



www.adinathindus.com



### Works Plant 1 & 2:

E-45 (G-2) & E-41 (A), RIICO Ind. Area  
Khushkhera, Bhiwadi, Dist. Alwar  
Rajasthan-301707 (INDIA)



gautam.jain@adinathindus.com



### Corporate Office:

31, Rajendra Park, Pusa Road  
New Delhi- 110060 (INDIA)



gaurav.jain@adinathindus.com



marketinghod@adinathindus.com







## ANTI BIRD GUARD DISC

Anti Bird Guard Disc used as a Bird Repellent & is installed on OHE Cantilever Insulators to avoid Bird strike on Traction System of Metro Rails and Railways. Anti Bird Guard Disc helps to Prevent formation of continuous path between Phase and Earth through the body of the Birds.

### Design:

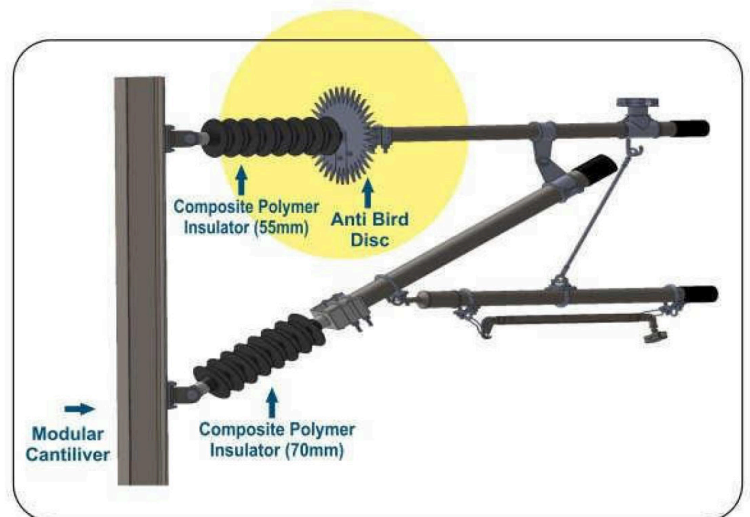
We have Designed our Anti Bird Guard Disc for both Composite Polymer Insulators and Porcelain Insulators. The same can be fitted on Metal End fitting or on Insulator Core as per Customer requirement.

Our Design includes Silicon Rubber 'O' Ring to avoid any Damage on Insulators Core while fitment.

### Advantages:

Our Anti Bird Guard Discs are made of Polycarbonate V<sub>2</sub>- Grade with the following Advantages:

- Good Dimensional Stability.
- Chemical Resistance.
- Good Optical Clarity.
- UV Resistance.
- Fire Retardant Properties.
- Good Electrical Insulation.
- Impact Resistance.
- Easy to Fit.



### Type Test:

Our Anti Bird Guard Discs are Type Tested from NABL Accredited Laboratory as per RDSO & DMRC Specifications for the following tests.

- Tensile Strength
- Specific Gravity
- Impact Strength
- Flammability Test
- Dielectric Strength

Note: We can also Design and Manufacture as per Customer Requirements.



ANTI BIRD GUARD DISC



+91-98100 60890  
+91-98111 54680



info@adinathindus.com



www.adinathindus.com



#### Works Plant 1 & 2:

E-45 (G-2) & E-41 (A), RIICO Ind. Area  
Khushkhera, Bhiwadi, Dist. Alwar  
Rajasthan-301707 (INDIA)



gautam.jain@adinathindus.com



#### Corporate Office:

31, Rajendra Park, Pusa Road  
New Delhi- 110060 (INDIA)



gaurav.jain@adinathindus.com



marketinghod@adinathindus.com

